

|  |                        |                             |  |
|--|------------------------|-----------------------------|--|
| WAAS<br>CH <b>77617</b><br><b>W09A</b> | APP CRS<br><b>090°</b> | Rwy Idg<br>TDZE<br>Apt Elev | <b>5999</b><br><b>96</b><br><b>112</b> |
|--|------------------------|-----------------------------|--|

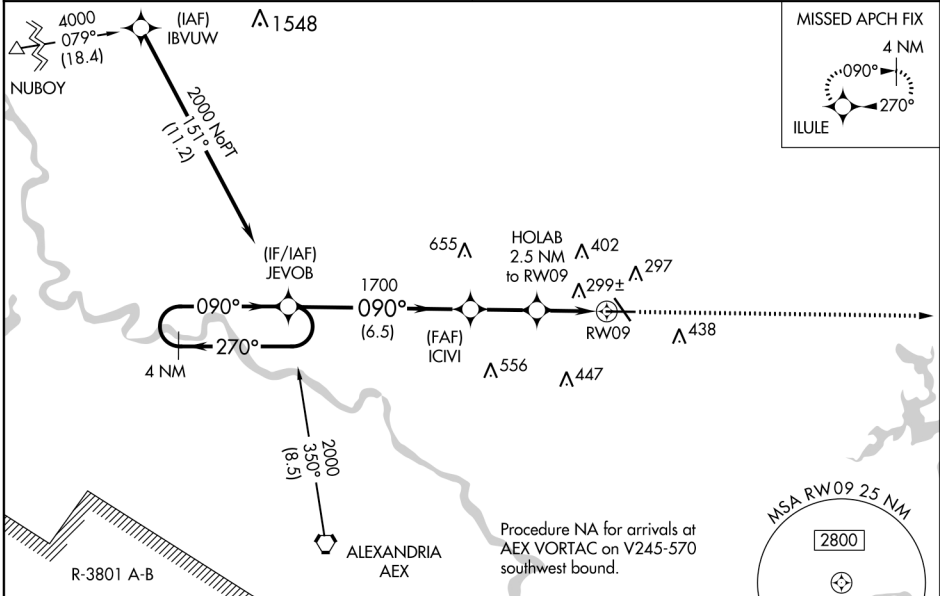
# RNAV (GPS) RWY 9

ESLER RGNL (E/SF)

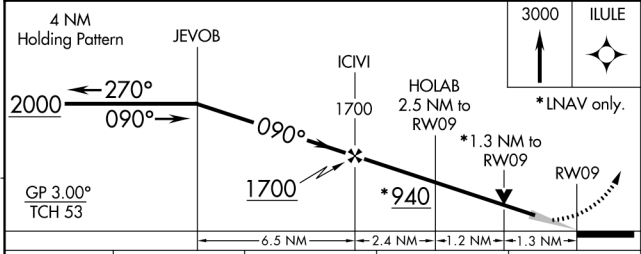
**▼** When VGSi inop, Circling Rwy 14/32 NA at night. Baro-VNAV and VDP NA when using Alexandria Intl altimeter setting. For uncompensated Baro-VNAV systems, LNAV/VNAV NA below -6°C (22°F) or above 54°C (130°F). DME/DME RNP-0.3 NA. When local altimeter setting not received, use Alexandria Intl altimeter setting and increase all DA 35 feet and all MDA 40 feet; increase LNAV/VNAV all Cats visibility 1/8 mile.

**MISSED APPROACH:** Climb to 3000 direct ILULE and hold.

|                                    |                               |
|------------------------------------|-------------------------------|
| POLK APP CON<br><b>125.4 254.8</b> | UNICOM<br><b>122.8 (CTAF)</b> |
|------------------------------------|-------------------------------|



|          |         |
|----------|---------|
| ELEV 112 | TDZE 96 |
|----------|---------|



| CATEGORY     | A     | B           | C               | D                                    |
|--------------|-------|-------------|-----------------|--------------------------------------|
| LPV DA       |       | 296-3/4     | 200 (200-3/4)   |                                      |
| LNAV/VNAV DA |       | 609-1 3/4   | 513 (500-1 3/4) |                                      |
| LNAV MDA     | 560-1 | 464 (500-1) | 560-1 3/8       | 464 (500-1 3/8)                      |
| CIRCLING     | 600-1 | 488 (500-1) | 600-1 1/2       | 740-2<br>488 (500-1 1/2) 628 (700-2) |

ALEXANDRIA, LOUISIANA  
Amdt 2A 21AUG14

31°24'N-92°18'W

# RNAV (GPS) RWY 9

ESLER RGNL (E/SF)

SC-4, 28 MAR 2019 to 25 APR 2019


SC-4, 28 MAR 2019 to 25 APR 2019

|  |                        |  |
|--|------------------------|--|
| WAAS<br>CH <b>61103</b><br><b>W27A</b> | APP CRS<br><b>270°</b> | Rwy Idg <b>5999</b><br>TDZE <b>92</b><br>Apt Elev <b>112</b> |
|--|------------------------|--|

# RNAV (GPS) RWY 27

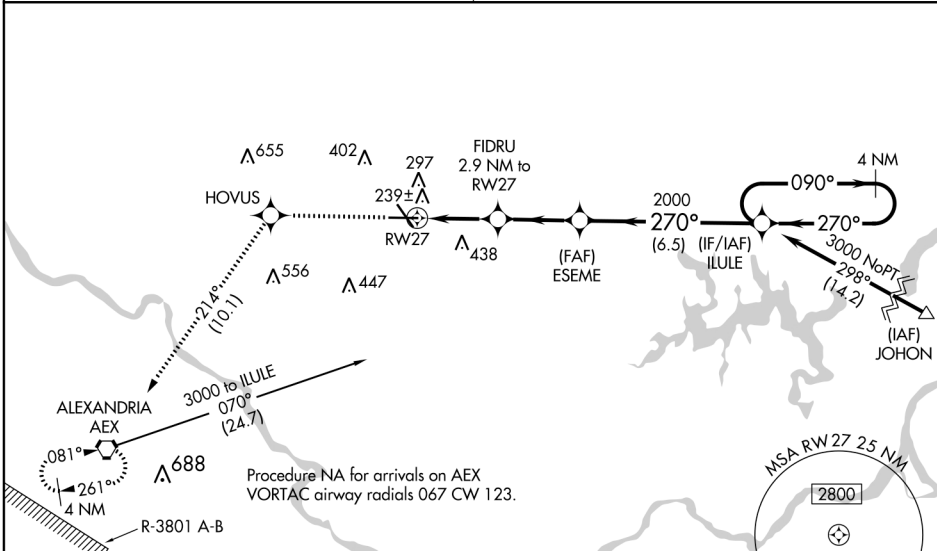
ESLER RGNL (E/SF)

▼ When VGSI inop, Circling Rwy 14-32 NA at night. Baro-VNAV and VDP NA when using Alexandria Intl altimeter setting. For uncompensated Baro-VNAV systems, LNAV/VNAV NA below -6°C (22°F) or above 54°C (130°F). DME/DME RNP-0.3 NA. When local altimeter setting not received, use Alexandria Intl altimeter setting and increase all DA 35 feet and all MDA 40 feet, increase LNAV/VNAV all Cats and LNAV Cat C/D visibility 1/8 mile. For inoperative MALS increase LNAV/VNAV all Cats visibility to 1 mile and LNAV Cat C/D visibility to 1/8. For inoperative MALS, when using Alexandria Intl altimeter setting, increase LNAV/VNAV all Cats visibility to 1 1/8 mile.

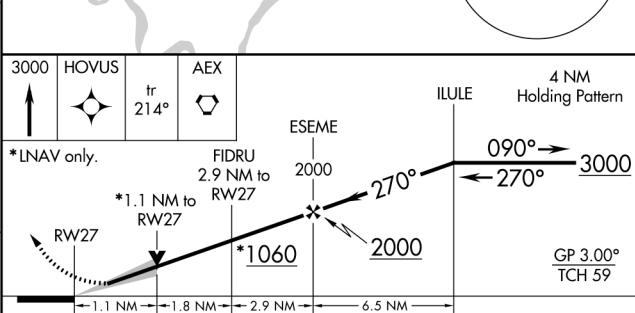
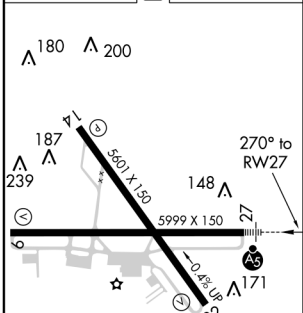
MALS  
 MISSED APPROACH:  
 Climb to 3000 direct HOVUS and on track 214° to AEX VORTAC and hold.

POLK APP CON  
**125.4 254.8**

UNICOM  
**122.8 (CTAF)**



ELEV 112 TDZE 92



| CATEGORY     | A       | B             | C                            | D                    |
|--------------|---------|---------------|------------------------------|----------------------|
| LPV DA       |         | 292-1/2       | 200 (200-1/2)                |                      |
| LNAV/VNAV DA |         | 422-5/8       | 330 (400-5/8)                |                      |
| LNAV MDA     | 500-1/2 | 408 (400-1/2) | 500-3/4                      | 408 (400-3/4)        |
| CIRCLING     | 600-1   | 488 (500-1)   | 600-1 1/2<br>488 (500-1 1/2) | 740-2<br>628 (700-2) |

REIL Rws 9, 14 and 32  
 MIRL Rwy 14-32  
 HIRL Rwy 9-27

ALEXANDRIA, LOUISIANA  
 Amdt 2A 21AUG14

31°24'N-92°18'W

# RNAV (GPS) RWY 27

ESLER RGNL (E/SF)

SC-4, 28 MAR 2019 to 25 APR 2019

SC-4, 28 MAR 2019 to 25 APR 2019